

The product using material and processing must conform to the "WI-PZ-001"HSF technical standard control requirements

RoHS+HF

NOTE:

- MATERIAL SPECIFICATION:
 - HOUSING: LCP,UL94V-0
 - CONTACTS: PHOSPHOR BRONZE
 - SOLDER TABS: PHOSPHOR BRONZE
- PLATING SPECIFICATION:
 - CONTACTS: TIN/GOLD FLASH PLATED OVER ALL.
 - SOLDER TABS: TIN/GOLD FLASH PLATED OVER ALL.
- MECHANICAL PERFORMANCE:
 - RETENTIVITY FORCE: 0.3KGf/pin min
 - DURABILITY: 30 CYCLES.
- ELECTRICAL PERFORMANCE:
 - CURRENT RATING: 0.3A
RATED VOLTAGE : 50V AC/DC
 - CONTACT RESISTANCE: 50 mΩ MAX
 - INSULATION RESISTANCE: 500MΩ Min
 - DIELECTRIC WITHSTANDING : 150V
- ENVIRONMENTAL PERFORMANCE:
 - OPERATING TEMPERATURE: -40°C~+85°C.
- PACKAGE SPEC: REEL
- P/N: B0503 27 M 0-2 XX 2 X X 2 01

A

B

C

D

E

F

G

H

A

B

C

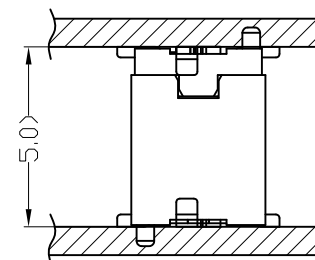
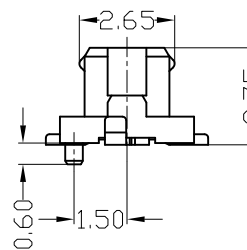
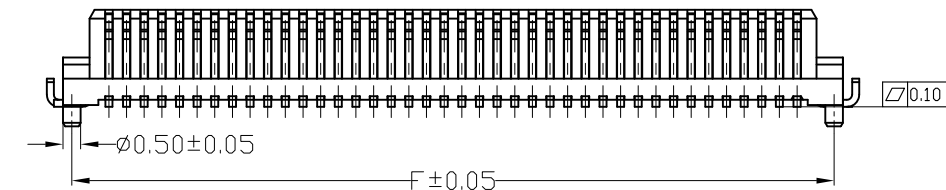
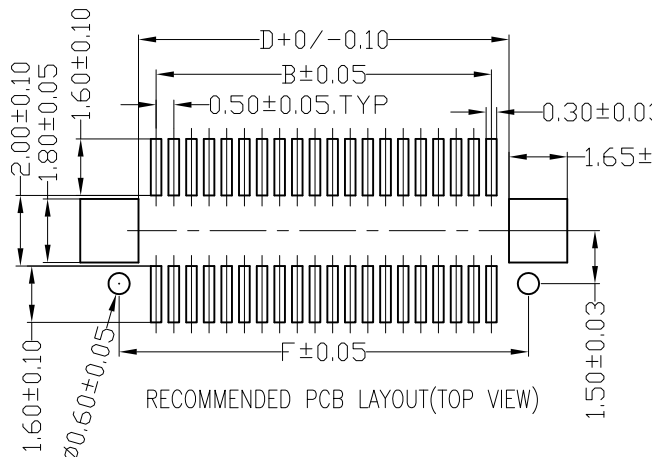
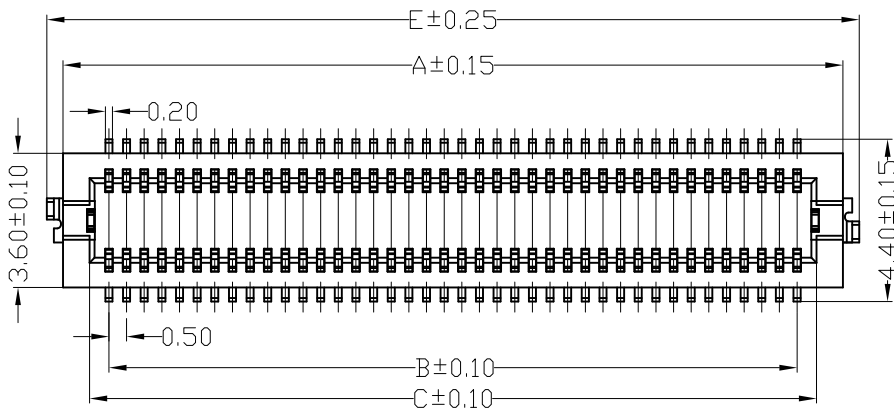
D

E

F

G

H



SERIES NO: B0503 27 M 0-2 XX 2 X X 2 01

HEIGHT: 27-2.70H

MALE FEMALE: M-MALE

ANGLE: 0-180°

ROW NO: 2-DOUBLE ROW

PIN Q'PY: 10~80pin

With SOLDER TABS

COLOR:
A-BLACK
K-WHITE
S-NATURE

PLATING:
A-ALL AU G/F
C-BRIGHE TIN
D-MATTE Tin

TERMPPOINT:
2-SMT

CKT.	Dimensions(mm)					
	A	B	C	D	E	F
10	4.70	2.00	3.10	3.82	5.50	4.10
20	7.20	4.50	5.60	6.32	8.00	6.60
30	9.70	7.00	8.10	7.82	10.50	9.10
36	11.20	8.50	9.60	10.32	12.00	10.60
40	12.20	9.50	10.60	11.32	13.00	11.60
50	14.70	12.00	13.10	13.82	15.50	14.10
60	17.20	14.50	15.60	16.32	18.00	16.60
68	19.20	16.50	17.60	18.32	20.00	18.60
70	19.70	17.00	18.10	18.82	20.50	19.10
80	22.20	19.50	20.60	21.32	23.00	21.60

REV.	REVISION RECORD	DATE	GENERAL TOLERANCES		SCALE:	NAME	DATE	PART.NO:
A0	NEW RELEASE	21.11.17	LINEAR	ANGLES	1:1	Wang_jr	21.11.17	B050327M0-2XX2XX201
			0.0±0.35	X'REF±6°	APPROVED	Han_Gao	21.11.17	TITLE: Board to Board Pitch0.5mm DF12 H2.7mm 双排立贴带柱带接地片公座
			0.00±0.25	X'±3°	DESIGNER	Zijun_Huang	21.11.17	
			0.000±0.10	X'X' ±2°	DRAWN			

DWG.NO: ENDE05	
REV: A0	
SHEET: 1/2	

1

2

3

4

5

6

7

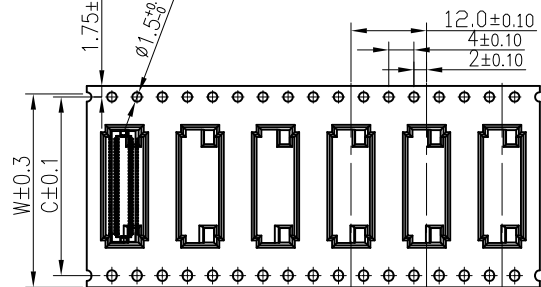
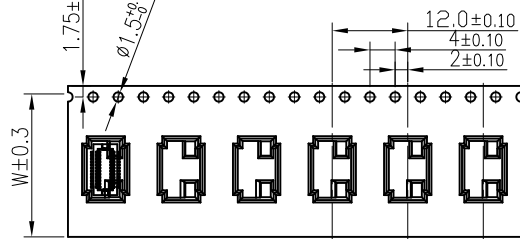
8

The product using material and processing must conform to the "WI-PZ-001"HSF technical standard control requirements

RoHS+HF

Tape width 16 and 24 mm

Tape width 32 and 44 mm



PULL OUT DIRECTION

PULL OUT DIRECTION

COVER TAPE
(上盖带)

PULL OUT DIRECTION

(PEELING ANGLE)

CARRIER TAPE
(下载带)

REEL
(胶盘)

GP LABEL
(环保标签)
(1PCS)

ø13.5



LABLE
(标签)

ø330

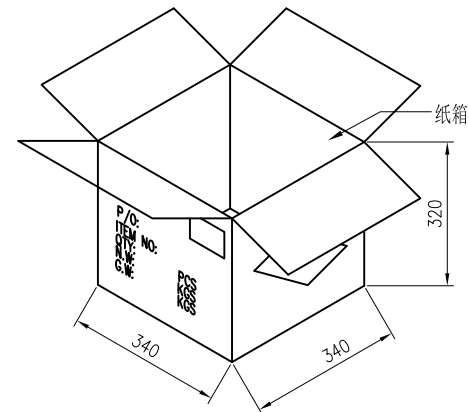
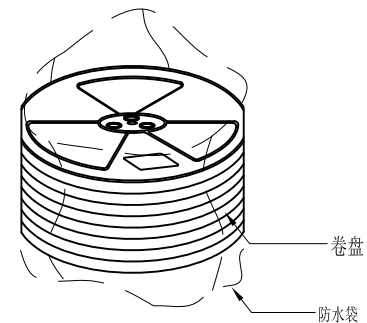
SCALE 1:4

W+4

PIN NO.	W	C	PCS /REEL	REEL/CARTON	SUM(PCS)
8PIN~58PIN	24	-	1500	11	16500
60PIN~78PIN	32	28.4	1500	8	12000
80PIN~100PIN	44	40.4	1500	6	9000

NOTE:

- 1.10 Sprocket hole pitch cumulative tolerance ± 0.20 .
2. Carrier camber is within 1mm in 100mm.
3. Material: black conductive polystyrene alloy.
4. Material Thickness: 0.3 ± 0.05 mm.
5. For tape width(dim W)16 and 24mm pilot holes are provided on one sides.
For tape width(dim W)32, 44 and 56mm pilot holes are provided on both sides.



REV.	REVISION RECORD	DATE	UNIT:mm	GENERAL TOLERANCES		SCALE: 1:1	NAME	DATE	PART.NO:	DWG.NO:	 WanLian Teconology Co., Ltd
AO	NEW RELEASE	21.11.17		LINEAR	ANGLES	APPROVED	Wang_jr	21.11.17	B050327M0-2XX2XX201	ENDE05	
			0.00±0.25	X°±3°	DESIGNER	Han_Gao	21.11.17	TITLE: 包装规范		REV: A0	SHEET: 2/2
			SIZE: A4	0.000±0.10	X°X' ±2°	DRAWN	Zijun_Huang	21.11.17			